

ABSTRACT PORTRAITS

Paul Klee's painting is abstract rather than realistic. He used geometric shapes like circles, ovals, triangles, rectangles, and squares to make his portrait. You can draw a picture of people you know in the same style.

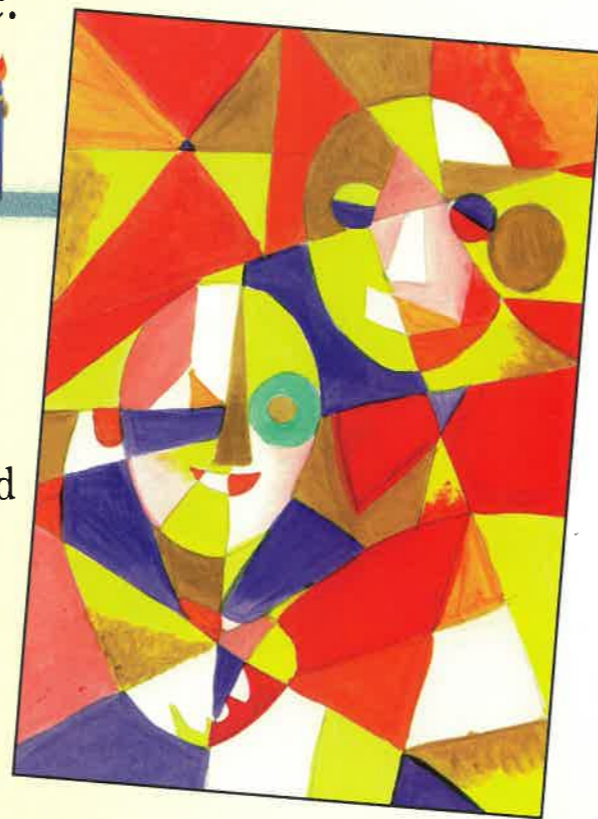
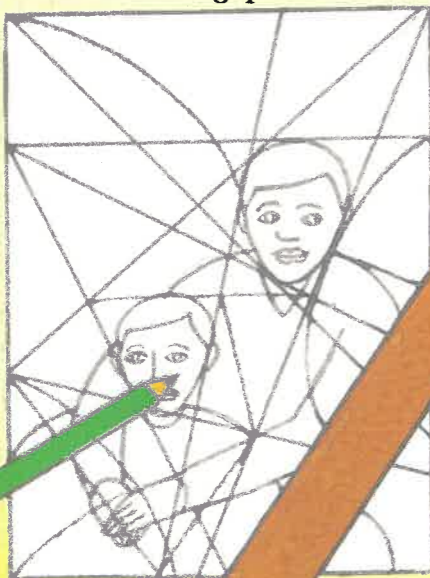
WHAT YOU NEED
Paper • Pens
Pencils • Ruler
Crayons • Chalks
Paints

PROJECT: ARRANGING SHAPES



Step 1. Look at what you are going to draw and decide how you could divide it into geometric shapes. Draw in the body and head shapes as a starting point.

Step 2. Draw in shapes across and around the people. Use curved and straight lines and many different shapes.



Step 3. Choose some colors that you think will give the portraits life and character. You can use pencils, crayons, chalks, or paints to color in your drawing.

GALLERY

Senecio 1922

PAUL KLEE (1879 – 1940)



SIMPLE SHAPES
Can you see how this face is made up of simple rectangles, squares, triangles, and circles?



COLOR
Each shape and color is carefully chosen to give the face expression and make it come alive.



TEXTURE
Klee painted this picture on linen, which is a roughly woven material. You can see the texture of the cloth through the paint.

Paul Klee did not paint like other artists of his day. He liked to work alone and usually did about two hundred pictures a year, each one different from the last. Many of his pictures were made up of shapes and patterns that had a hidden meaning. This portrait is called *Senecio*, which is the name of a group of plants. The title is the clue to help us see that Klee has painted this face to look like the head of a flower.