

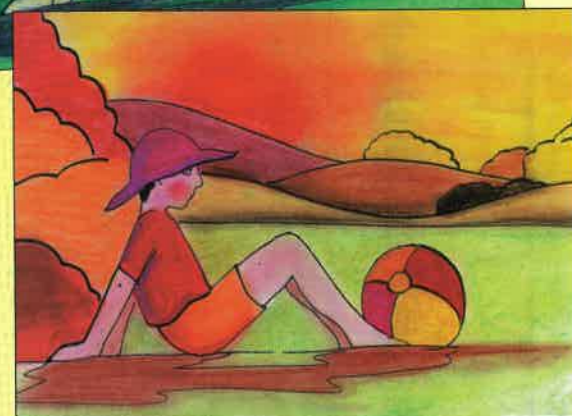
USE OF COLOR

Berthe Morisot used cool colors to create a peaceful mood. In your sketchbook, try mixing warm reds, yellows, purples, and oranges as well as cool greens, blues, grays, and lavenders. You can use them to create different moods in your work.

WHAT YOU NEED
Paper • Pencil
Tracing Paper
Paints
Paintbrush

PROJECT: WARM AND COOL COLORS

Step 1. Draw a picture of something you enjoy doing. Trace it and make an exact copy on a piece of paper the same size. Paint one picture using only warm colors.



Step 2. Paint the second picture using only cool colors and see how different the two pictures look. How do the colors make you feel? Which one do you prefer?



GALLERY

The Cradle 1872
BERTHE MORISOT (1841 – 1895)

SHADING
The woman is Edma, Berthe's sister. The loving mother with her black hair and dark clothes, quietly looking at her baby asleep, draws your eye toward the baby in the cradle.



COLORS
Most of the colors used by Morisot are cool blues, grays, greens, and whites. They create a sense of peace and quiet, just right for the baby.

LIGHT
The dark background makes the light cradle stand out.

Women were not allowed to study art in college when Berthe Morisot lived in France. Berthe and her sister Edma were determined to learn to paint, so their father allowed them to have lessons. Berthe had a free and easy style, putting the paint on the canvas so you could see the different brush strokes and colors.